

# Bashan

2



3

8

12

Detailed description: This musical score for 'Bashan' is written in treble clef with a key signature of two sharps (F# and C#) and a 2/2 time signature. It consists of four staves. The first staff is a whole rest. The second staff begins at measure 3 with a quarter rest, followed by quarter notes G4, A4, B4, C5, and half notes D5, E5. The third staff begins at measure 8 with half notes F#4, G4, A4, B4, C5, and D5. The fourth staff begins at measure 12 with quarter notes E5, F#5, G5, A5, B5, and C6, ending with a double bar line.

# Bracondale

2



3

7

Detailed description: This musical score for 'Bracondale' is written in treble clef with a key signature of two sharps (F# and C#) and a 3/2 time signature. It consists of two staves. The first staff is a whole rest. The second staff begins at measure 3 with a quarter rest, followed by quarter notes G4, A4, B4, C5, and half notes D5, E5. The third staff begins at measure 7 with quarter notes F#4, G4, A4, B4, C5, and D5, ending with a double bar line.

# Batter Sea

2



3



9



14



# Bawardy

2



3



9



14



# Baytown

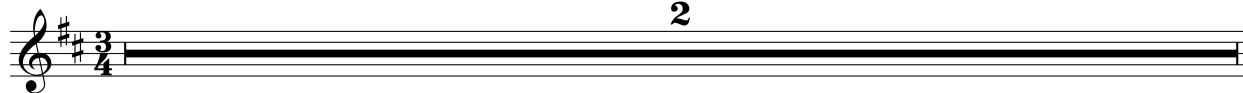
Musical score for "Baytown" in G major (one sharp) and 2/4 time. The score consists of four staves of music. The first staff begins with a measure containing a fermata and a '2' above it, indicating a second ending. The melody is written in treble clef. The piece concludes with a double bar line at the end of the fourth staff.

# Behold Him Now

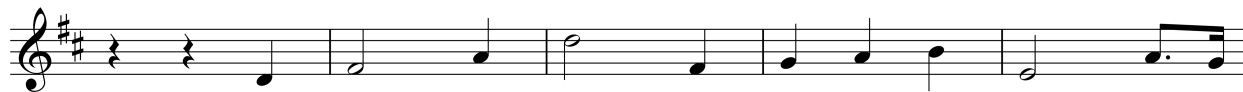
Musical score for "Behold Him Now" in G major (one sharp) and 3/4 time. The score consists of three staves of music. The first staff begins with a measure containing a fermata and a '2' above it, indicating a second ending. The melody is written in treble clef. The piece concludes with a double bar line at the end of the third staff.

# Belgrave

2



3



8



13



# Believe and Obey

2



10



19



27





# Blendon

Musical score for 'Blendon' in G major (one sharp) and 3/4 time. The score consists of four staves. The first staff begins with a treble clef, a key signature of one sharp (F#), and a 3/4 time signature. A fermata is placed over the first measure, with the number '2' written above it. The second staff starts at measure 6. The third staff starts at measure 10. The fourth staff starts at measure 15 and ends with a double bar line.

# Bonar Bunk

Musical score for 'Bonar Bunk' in G major (one sharp) and 3/4 time. The score consists of four staves. The first staff begins with a treble clef, a key signature of one sharp (F#), and a 3/4 time signature. A fermata is placed over the first measure, with the number '2' written above it. The second staff starts at measure 3. The third staff starts at measure 9. The fourth staff starts at measure 14 and ends with a double bar line.

# Bordeaux

Musical score for 'Bordeaux' in 3/4 time, key of D major. The score consists of four staves of music. The first staff begins with a fermata over a whole note D4, with a '2' above it. The second staff starts at measure 7. The third staff starts at measure 11. The fourth staff starts at measure 16 and ends with a double bar line.

# Bradford

Musical score for 'Bradford' in 3/4 time, key of D major. The score consists of three staves of music. The first staff begins with a fermata over a whole note D4, with a '2' above it. The second staff starts at measure 8. The third staff starts at measure 13 and ends with a double bar line.

# Brotherton

2



3

9

14

The musical score for 'Brotherton' is written in treble clef, key of D major (two sharps), and 3/4 time. It consists of four staves. The first staff begins with a double bar line and a fermata, with the number '2' above it. The second staff starts at measure 3 and contains a sequence of eighth and quarter notes. The third staff starts at measure 9 and continues the melodic line. The fourth staff starts at measure 14 and concludes with a double bar line.

# Broxburn

2



8

15

22

29

The musical score for 'Broxburn' is written in treble clef, key of D major (two sharps), and 3/4 time. It consists of five staves. The first staff begins with a double bar line and a fermata, with the number '2' above it. The second staff starts at measure 8 and contains a sequence of quarter and eighth notes. The third staff starts at measure 15 and continues the melodic line. The fourth staff starts at measure 22 and continues the melodic line. The fifth staff starts at measure 29 and concludes with a double bar line.

# A Rainbow on the Cloud

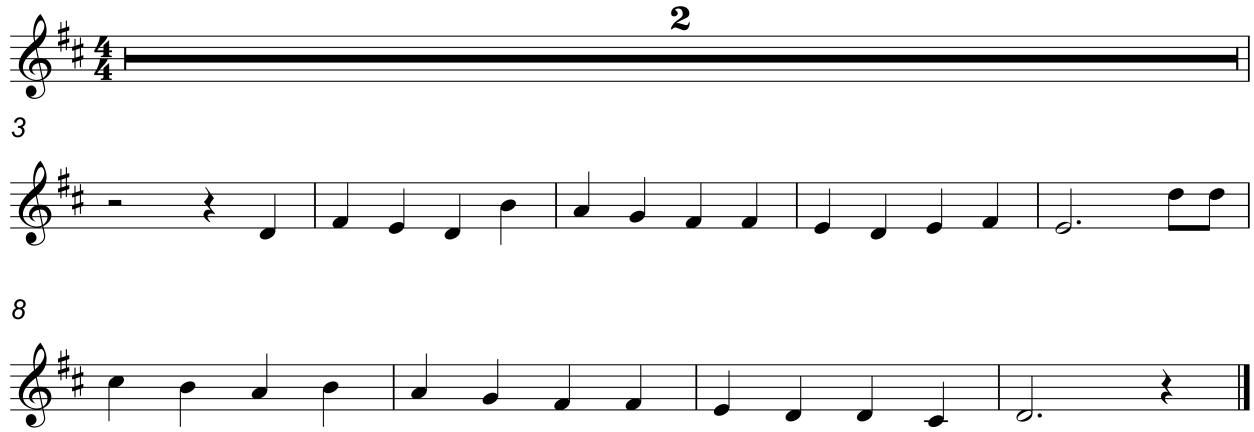
Musical score for "A Rainbow on the Cloud" in G major (one sharp) and 4/4 time. The score consists of four staves of music. The first staff begins with a double bar line, a fermata, and a measure rest, with a '2' above it. The second staff starts at measure 7. The third staff starts at measure 12. The fourth staff starts at measure 16 and ends with a double bar line.

# Aalborg

Musical score for "Aalborg" in G major (one sharp) and 4/4 time. The score consists of four staves of music. The first staff begins with a double bar line, a fermata, and a measure rest, with a '2' above it. The second staff starts at measure 3. The third staff starts at measure 10. The fourth staff starts at measure 15 and ends with a double bar line.

# Baginton

2



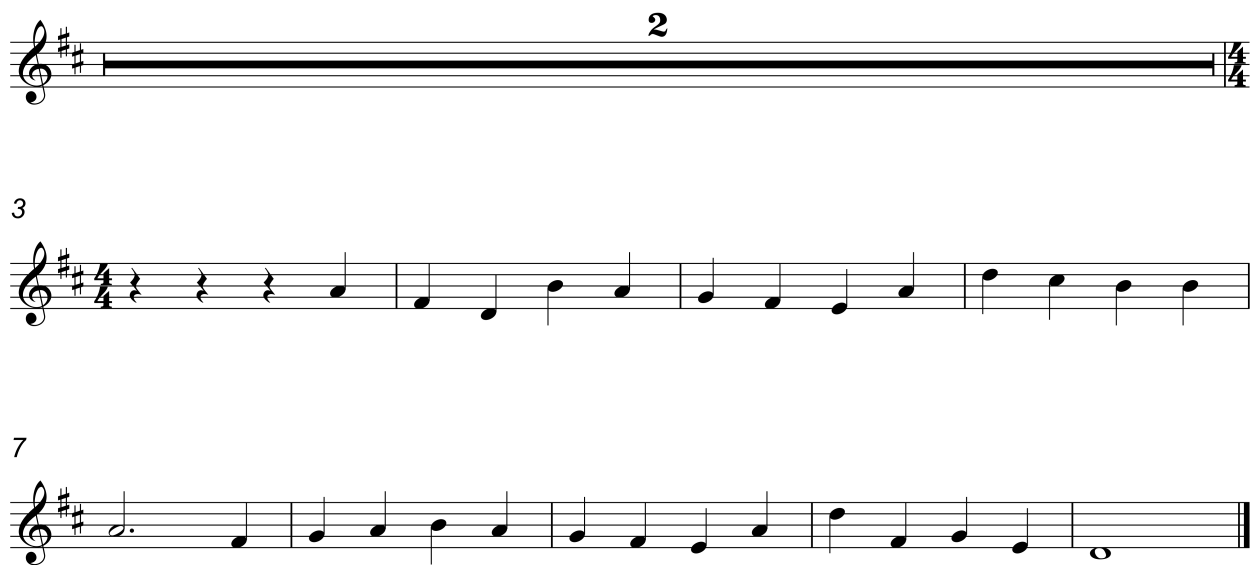
3

8

Detailed description: This block contains the first eight measures of the piece 'Baginton'. It is written in treble clef with a key signature of two sharps (F# and C#) and a 4/4 time signature. Measure 1 is a whole rest. Measure 2 is a whole note G4. Measure 3 is a quarter note A4. Measure 4 is a quarter note B4. Measure 5 is a quarter note C5. Measure 6 is a quarter note B4. Measure 7 is a quarter note A4. Measure 8 is a quarter note G4. The piece ends with a double bar line.

# Bedford

2



3

7

Detailed description: This block contains the first seven measures of the piece 'Bedford'. It is written in treble clef with a key signature of two sharps (F# and C#) and a 4/4 time signature. Measure 1 is a whole rest. Measure 2 is a quarter note G4. Measure 3 is a quarter note A4. Measure 4 is a quarter note B4. Measure 5 is a quarter note C5. Measure 6 is a quarter note B4. Measure 7 is a quarter note A4. The piece ends with a double bar line.

# Belgrade

Musical score for 'Belgrade' in G major (one sharp) and 4/4 time. The score consists of four staves of music. The first staff begins with a measure containing a fermata and the number '2' above it. The melody is written in treble clef and ends with a double bar line.

2

6

11

15

# Beloved

Musical score for 'Beloved' in G major (one sharp) and 4/4 time. The score consists of four staves of music. The first staff begins with a measure containing a fermata and the number '2' above it. The melody is written in treble clef and ends with a double bar line.

2

3

8

13

# Belville

Musical score for 'Belville' in G major (one sharp) and 4/4 time. The score consists of four staves. The first staff begins with a measure containing a fermata and a '2' above it, indicating a second ending. The melody is composed of quarter and eighth notes, ending with a double bar line. The second staff continues the melody with quarter and eighth notes. The third staff continues with quarter and eighth notes, including some beamed eighth notes. The fourth staff concludes the piece with quarter and eighth notes, ending with a double bar line.

# Berno

Musical score for 'Berno' in G major (one sharp) and 4/4 time. The score consists of four staves. The first staff begins with a measure containing a fermata and a '2' above it, indicating a second ending, and ends with a 4/4 time signature. The second staff starts with a quarter rest followed by quarter and eighth notes. The third staff continues with quarter and eighth notes, including some beamed eighth notes. The fourth staff concludes the piece with quarter and eighth notes, ending with a double bar line.

# Better World

2



3



9



14



# Birkdale

2



3



8



13





# Blairgowrie

2



3



9



15

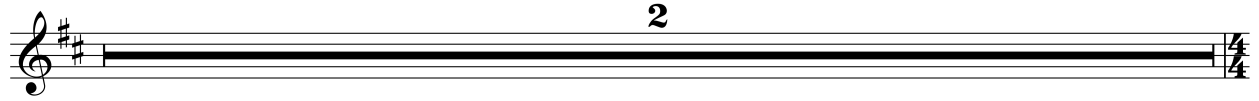


# Blessed Be the Fountain

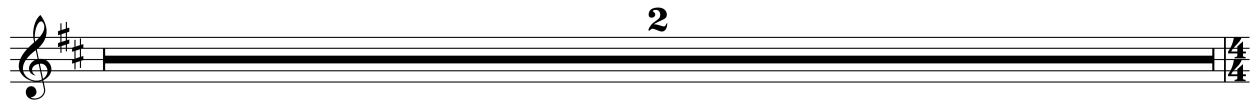
2



# Blessed Bright and Shining Star



# Bologna



# Bolwell

2



3



7



11



# Books for Me

2



3



8



# Bor

2

Musical score for 'Bor' in treble clef, key of D major (two sharps), 4/4 time. The score consists of four staves. The first staff (measure 1-2) contains a whole rest for two measures. The second staff (measures 3-8) begins with a quarter rest for one measure, followed by a sequence of eighth and quarter notes. The third staff (measures 9-13) continues with quarter and eighth notes. The fourth staff (measures 14-19) concludes the piece with quarter notes and a final whole note.

# Bovey

2

Musical score for 'Bovey' in treble clef, key of D major (two sharps), 4/4 time. The score consists of four staves. The first staff (measures 1-2) contains a whole rest for two measures. The second staff (measures 3-6) begins with quarter rests for two measures, followed by a sequence of quarter and eighth notes. The third staff (measures 7-10) continues with quarter and eighth notes. The fourth staff (measures 11-14) concludes the piece with quarter notes and a final whole note.

# Bradbury



7



13



# Bradbury



# Bright and Beautiful

Musical score for "Bright and Beautiful" in G major (one sharp) and 4/4 time. The score consists of five staves. The first staff begins with a treble clef, a key signature of one sharp (F#), and a 4/4 time signature. A measure rest is followed by a fermata with the number "2" above it. The melody continues with quarter and eighth notes. The second staff starts at measure 12, the third at measure 17, and the fourth at measure 22. The piece concludes with a double bar line.

# Brighten the Corner Where You Are

Musical score for "Brighten the Corner Where You Are" in G major (one sharp) and 4/4 time. The score consists of four staves. The first staff begins with a treble clef, a key signature of one sharp (F#), and a 4/4 time signature. A measure rest is followed by a fermata with the number "2" above it. The second staff starts at measure 3 and features a rhythmic pattern of eighth and quarter notes. The third staff starts at measure 8, and the fourth at measure 14. The piece concludes with a double bar line.

# Brother James Aire



# Belarus



# Beautiful Garden

2

Musical score for 'Beautiful Garden' in G major (one sharp) and 6/4 time. The score consists of five staves. The first staff is a treble clef with a 3-measure rest. The second staff begins with a 3-measure rest. The third staff is marked with a 12 below the first measure. The fourth staff is marked with a 13 below the first measure. The fifth staff ends with a double bar line.

# Blessed are the Peacemakers

2

Musical score for 'Blessed are the Peacemakers' in G major (one sharp) and 4/4 time. The score consists of four staves. The first staff begins with a 2-measure rest. The second staff is marked with an 8 below the first measure. The third staff is marked with a 13 below the first measure. The fourth staff is marked with a 18 below the first measure. The score ends with a double bar line.



# Acropolis

2

3

9

14

The musical score for 'Acropolis' is written in treble clef with a key signature of two sharps (F# and C#) and a 6/8 time signature. It begins with a whole rest on the first staff, followed by a double bar line. The second staff starts at measure 3 with a quarter rest, followed by a series of eighth and quarter notes. The third staff continues the melody from measure 9, and the fourth staff concludes the piece at measure 14 with a final whole note and a double bar line.

# Beautiful Beckoning Hands

2

3

9

14

The musical score for 'Beautiful Beckoning Hands' is written in treble clef with a key signature of two sharps (F# and C#) and a 6/8 time signature. It begins with a whole rest on the first staff, followed by a double bar line. The second staff starts at measure 3 with a quarter rest, followed by a series of eighth and quarter notes. The third staff continues the melody from measure 9, and the fourth staff concludes the piece at measure 14 with a final whole note and a double bar line.

# Beautiful Star

2

3

9

15

Detailed description: This musical score is for the piece 'Beautiful Star'. It is written in treble clef with a key signature of one sharp (F#) and a 6/8 time signature. The score consists of four staves. The first staff is a whole rest, with the number '2' centered above it. The second staff begins at measure 3 and contains the first line of the melody. The third staff begins at measure 9 and contains the second line of the melody. The fourth staff begins at measure 15 and contains the third line of the melody. The piece concludes with a double bar line at the end of the fourth staff.

# Besancon

2

3

9

Detailed description: This musical score is for the piece 'Besancon'. It is written in treble clef with a key signature of one sharp (F#) and a 6/8 time signature. The score consists of three staves. The first staff is a whole rest, with the number '2' centered above it. The second staff begins at measure 3 and contains the first line of the melody. The third staff begins at measure 9 and contains the second line of the melody. The piece concludes with a double bar line at the end of the third staff.

# Bless this Hour of Prayer

2

3

9

14

Detailed description: This musical score is for the hymn 'Bless this Hour of Prayer'. It is written in treble clef with a key signature of one sharp (F#) and a 6/8 time signature. The score consists of four staves. The first staff is a whole rest, with a '2' above it. The second staff begins at measure 3 and contains the first line of the melody. The third staff begins at measure 9 and contains the second line. The fourth staff begins at measure 14 and contains the third line. The melody is simple and hymnic, featuring quarter and eighth notes with some rests.

# Blessed Hope

2

3

9

15

Detailed description: This musical score is for the hymn 'Blessed Hope'. It is written in treble clef with a key signature of one sharp (F#) and a 6/8 time signature. The score consists of four staves. The first staff is a whole rest, with a '2' above it. The second staff begins at measure 3 and contains the first line of the melody. The third staff begins at measure 9 and contains the second line. The fourth staff begins at measure 15 and contains the third line. The melody is more rhythmic than the first hymn, featuring eighth and sixteenth notes with some rests.

# Brave Daniel

2

Musical score for 'Brave Daniel' in G major, 6/8 time. The score consists of four staves. The first staff is a whole rest. The second staff begins at measure 3. The third staff begins at measure 9. The fourth staff begins at measure 14. The piece concludes with a double bar line at the end of the fourth staff.

# Brookline

2

Musical score for 'Brookline' in G major, 6/8 time. The score consists of four staves. The first staff is a whole rest. The second staff begins at measure 3. The third staff begins at measure 9. The fourth staff begins at measure 14. The piece concludes with a double bar line at the end of the fourth staff.

# Blessed Redeemer

2

3

9

15

Detailed description: This musical score is for the hymn 'Blessed Redeemer'. It is written in treble clef with a key signature of one sharp (F#) and a 9/8 time signature. The score consists of four staves. The first staff is a whole rest, with a '2' above it. The second staff begins at measure 3 and contains the first line of the melody. The third staff begins at measure 9 and contains the second line. The fourth staff begins at measure 15 and contains the third line. The melody is primarily composed of quarter and eighth notes, with some rests and a final long note in the fourth staff.

# Beautiful Robe and Crown

2

3

9

14

Detailed description: This musical score is for the hymn 'Beautiful Robe and Crown'. It is written in treble clef with a key signature of one sharp (F#) and a 12/8 time signature. The score consists of four staves. The first staff is a whole rest, with a '2' above it. The second staff begins at measure 3 and contains the first line of the melody. The third staff begins at measure 9 and contains the second line. The fourth staff begins at measure 14 and contains the third line. The melody is primarily composed of quarter and eighth notes, with some rests and a final long note in the fourth staff.

